



Mar 11, 2023

# Ussing chamber experiments for distension evoked secretion in mucosa/submucosa preparations from human colon

DOI

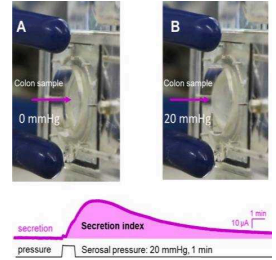
[dx.doi.org/10.17504/protocols.io.8epv5joqdl1b/v1](https://dx.doi.org/10.17504/protocols.io.8epv5joqdl1b/v1)Klaus Michel<sup>1</sup>, Stefanie Schäuuffele<sup>1</sup>, Michael Schemann<sup>1</sup>, Gemma Mazzuoli-Weber<sup>2</sup><sup>1</sup>Technical University Munich; <sup>2</sup>University of Veterinary Medicine Hannover

SPARC

Tech. support email: [info@neuinfo.org](mailto:info@neuinfo.org)

Manmeet Bains

UCLA



## Create & collaborate more with a free account

Edit and publish protocols, collaborate in communities, share insights through comments, and track progress with run records.

[Create free account](#)OPEN  ACCESSDOI: <https://dx.doi.org/10.17504/protocols.io.8epv5joqdl1b/v1>

**Protocol Citation:** Klaus Michel, Stefanie Schäuuffele, Michael Schemann, Gemma Mazzuoli-Weber 2023. Ussing chamber experiments for distension evoked secretion in mucosa/submucosa preparations from human colon. **protocols.io**

<https://dx.doi.org/10.17504/protocols.io.8epv5joqdl1b/v1>



**License:** This is an open access protocol distributed under the terms of the [Creative Commons Attribution License](#), which permits unrestricted use, distribution, and reproduction in any medium, provided the original author and source are credited

**Protocol status:** Working

**We use this protocol and it's working**

**Created:** March 06, 2023

**Last Modified:** March 11, 2023

**Protocol Integer ID:** 78229

**Keywords:** Ussing chamber, distention, enteric nervous system, submucosal plexus, secretion, secretion in human colon, secretion in mucosa, induced secretion response, submucosa preparations from human colon, human colon mucosal, secretory response, pressure application to the mucosal, induced secretion, secretion response, evoked secretion, serosal side in the human colon mucosal, mechnosensitive synapses because synaptic blockade, human colon, mucosal, synaptic blockade, mucosa, conotoxin gvia, mechnosensitive synapse, submucosa preparation, important role in distension, subsequent application of tetrodotoxin

**Funders Acknowledgements:**

NIH

Grant ID: OT2OD024899

## Abstract

This protocol is to investigate the mechanisms of mechanically induced secretion in human colon. For this purpose, we used the voltage clamp Ussing chamber method to gain insights into the distension induced secretion evoked by pressure application to the mucosal or serosal side in the human colon mucosal/submucosal samples. We could show that distension elicited a secretory response due to Cl<sup>-</sup> and HCO<sub>3</sub><sup>-</sup> fluxes into the lumen. Prostaglandins played an important role in distension induced secretion, because the cyclooxygenase inhibitor piroxicam significantly reduced the distension induced secretion response. Subsequent application of tetrodotoxin revealed a minor, but significant nervous component. This was likely due to activation of mechnosensitive synapses because synaptic blockade by  $\omega$ -conotoxin GVIA reduced the response to distension. Secretion was induced by tensile rather than compressive forces as preventing distension by a filter inhibited the secretion.

## Materials

- a. Samples of human colon
- b. Stereo Microscope SZ51, Olympus)
- c. Krebs solution for preparation containing in (mM): 117 NaCl, 11 Glucose, 4.7 KCl, 1.2 MgCl<sub>2</sub>, 1.2 NaH<sub>2</sub>PO<sub>4</sub>, 25 NaHCO<sub>3</sub>, 2.5 CaCl<sub>2</sub>; Carl Roth GmbH & Co. KG (Karlsruhe, Germany)
- d. Krebs solution for experiment containing in (mM): 117 NaCl, 11 Glucose, 4.7 KCl, 1.2 MgCl<sub>2</sub>, 1.2 NaH<sub>2</sub>PO<sub>4</sub>, 20 NaHCO<sub>3</sub>, 2.5 CaCl<sub>2</sub>; Carl Roth GmbH & Co. KG (Karlsruhe, Germany)
- e. EasyMount Ussing Chamber System EM8-C, with VCC MC6 and MC2 Voltage/Current Clamp Amplifier, P2300 Easy Mount Ussing chambers, EM-CSYS-4 / EM-CSYS-2 Easy Mount holders, P2020 Easy Mount Electrodes, P2023-20 electrode tips (Physiologic Instruments, Reno, USA)
- f. Homemade tissue holders (acrylic glass) with 0.5cm<sup>2</sup> or 1.08cm<sup>2</sup> tissue windows, equipped with 0.4mm insect pins for tissue mounting and stimulating electrodes (0.5mm platinum/iridium wire 90/10)
- g. Stimulator Grass SD-9
- h. PowerLab 8/35 8 channel analog to digital converter with LabChart 8 software
- i. Temperature controlled circulating waterbath to maintain using chambers at 37°C
- j. Ussing chamber pressure pump (see <https://discover.pennsieve.io/datasets/68>)
- k. Pharmacological substances included (with the final concentration given in brackets): Tropisetron (1μM, ICS-205-930, Sandoz, Basel), Piroxicam (10μM, Sigma-Aldrich, Taufkirchen, Germany), Gadolinium (100μM, Gadolinium(III)-chlorid Hexahydrat, Sigma-Aldrich), Neostigmin (1μM, Sigma-Aldrich), Tetrodotoxin (1μM, Biotrend Chemikalien GmbH, Cologne, Germany), Atropine (1μM, Sigma-Aldrich), Prostaglandin E2 (Sigma-Aldrich), ω-conotoxin GVIA (500nM, Alomone Labs, Jerusalem, Israel)

## Troubleshooting

- 1 Samples of human colon were placed in ice-cold oxygenated Krebs solution and washed by gentle agitation. Tissues were then dissected in fresh ice-cold oxygenated Krebs solution to obtain preparations containing the mucosa and all submucosal plexi.
- 2 Tissue samples were cut into pieces of 1cm<sup>2</sup> or 0.5cm<sup>2</sup> and mounted in the Ussing chamber holders. The holders were inserted into the Ussing chambers, and the chambers were filled with Krebs solution.
- 3 The tissue was equilibrated for 60min.
- 4 As a test for tissue viability, tissue resistance and the response to electrical field stimulation (EFS, 10Hz, pulse duration 1ms, 20V, 10sec) were recorded
- 5 For the mechanical stimulation both halves of the chambers were sealed with silicon elastomer plugs and the pressure pump was connected to the carbogen gas inlet of the mucosal or serosal chamber
- 6 Pharmacological substances were added on the serosal or mucosal side 30min before a mechanical stimulation.
- 7 For analysis, we calculated the integral of the response curve in the LabChart software