

Mar 25, 2018 Version 1

# Human rhinovirus screening conventional RT-PCR ("Gama assay") V.1

DOI

[dx.doi.org/10.17504/protocols.io.nz5df86](https://dx.doi.org/10.17504/protocols.io.nz5df86)

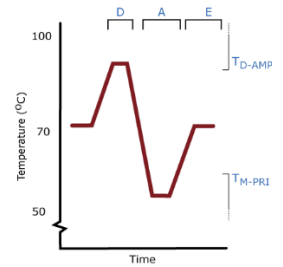
Ian M Mackay<sup>1</sup>

<sup>1</sup>The University of Queensland



Ian M Mackay

The University of Queensland



OPEN ACCESS



DOI: [dx.doi.org/10.17504/protocols.io.nz5df86](https://dx.doi.org/10.17504/protocols.io.nz5df86)

**Protocol Citation:** Ian M Mackay 2018. Human rhinovirus screening conventional RT-PCR ("Gama assay"). **protocols.io** <https://dx.doi.org/10.17504/protocols.io.nz5df86>

## Manuscript citation:

Ref 1.

Polymerase chain reaction amplification of rhinovirus nucleic acids from clinical material

<https://www.ncbi.nlm.nih.gov/pmc/articles/PMC338719/>

Ref 2.

Amplification of rhinovirus specific nucleic acids from clinical samples using the polymerase chain reaction.

<https://www.ncbi.nlm.nih.gov/pubmed/2544679>

**License:** This is an open access protocol distributed under the terms of the **Creative Commons Attribution License**, which permits unrestricted use, distribution, and reproduction in any medium, provided the original author and source are credited

**Protocol status:** Working

**We used this protocol in my group and it worked well.**

**Created:** March 25, 2018

**Last Modified:** March 28, 2018

**Protocol Integer ID:** 11037

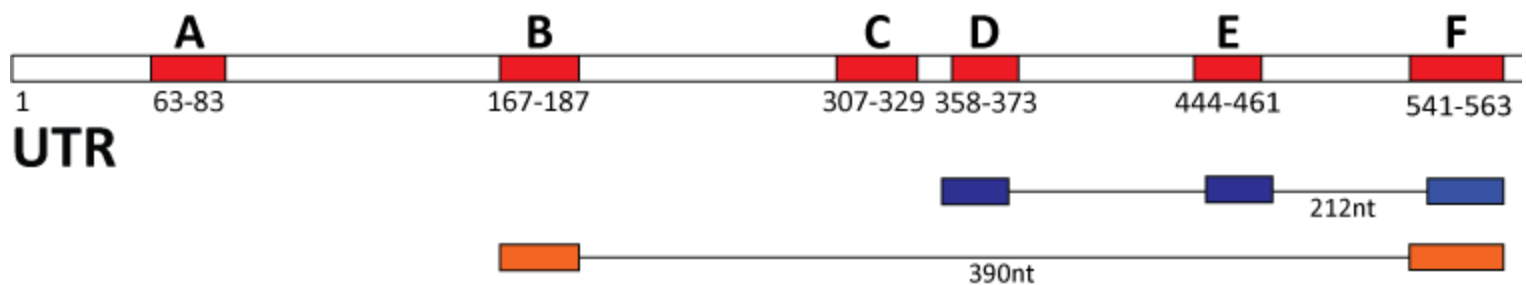
## Abstract

This is a very handy, previously published [Ref 1 and 2], rhinovirus (RV) screening assay which I and many others have used on many sample extracts, mostly originating from acutely ill paediatric patients, spanning well over a decade's worth of collection dates.

I have not confirmed that it can detect every single RV genotype but I do know that it detects *many* from each of the three RV species (*Human rhinovirus A*, *Human rhinovirus B* and *Human rhinovirus C*) as well as at least some *Human enterovirus* (EV) genotypes.


The assay picks up EVs due to the shared genetic similarities in the 5'UTR target region. EVs can be discriminated using subgenomic sequencing (see VP42 typing assay protocol), or simply described as "respiratory EVs" since there is no specific-specific vaccine or treatment available anyway.

This is a handy backup subgenomic sequencing assay for use primarily when the VP42 protocol fails to amplify a product for sequencing. It is worth noting that these *primers* span a target region that can produce confusing results. Recombination within the 5' end of the genome of some members of the genus *Enterovirus* can lead to 5'UTR sequences generated by RV-C genotypes that appear to be RV-As.



## Materials

### MATERIALS

 SensiFAST Probe no ROX one-step kit **Bioline Catalog #BIO-76005**

### STEP MATERIALS

 SensiFAST Probe no ROX one-step kit **Bioline Catalog #BIO-76005**

 SensiFAST Probe no ROX one-step kit **Bioline Catalog #BIO-76005**

## Protocol materials

 SensiFAST Probe no ROX one-step kit **Bioline Catalog #BIO-76005**

 SensiFAST Probe no ROX one-step kit **Bioline Catalog #BIO-76005**

 SensiFAST Probe no ROX one-step kit **Bioline Catalog #BIO-76005**

 SensiFAST Probe no ROX one-step kit **Bioline Catalog #BIO-76005**

## Before start

- If using a different brand or model of real-time thermocycler, check the concentration of ROX is adequate.
- Method assumes the user is familiar with the thermocycler and software used to run the protocol.


## Oligonucleotide sequences

1

Name	Sequence (5'-3')
GAMA_OL26_01.1	GCACTTCTGTTTCCCCC
GAMA_OL26_02.1	CGGACACCCAAAGTAG

1. Expected amplicon size ~380 base pairs
2. The naming used here is my in-house adaptation (FYI: 01 - forward / sense; 02 - reverse / antisense; .x - version of the design of this particular named oligonucleotide). If you prefer to be true to the original publication, please see Ref 1 and Ref 2

## Reagents

- 2  SensiFAST Probe no ROX one-step kit **Bioline Catalog #BIO-76005**

## Reaction set-up

- 3 The assay has been used on a range of conventional block thermal cyclers.

Prepare sufficient mix for the number of reactions.

Include a suitable 'dead volume' as necessary if using a robotic dispenser.

Reagent	Vol (µl) x1	Final reaction concentration
Nuclease-free water	1.8	N/A
SensiFAST no ROX One-Step Mix(2X)	10	1X
Primers (2µM) <sup>1</sup>	4	400nM
MgCl <sub>2</sub> (25mM)	1.6	5mM
RNase inhibitor	0.4	Unknown
RT/Taq (?U/µl)	0.2	Unknown
Template	2	N/A

1. Both mixed to this final concentration
2. Dispense 15µL to each reaction well.
3. Add 5µL of template (extracted RNA, controls or NTC [nuclease-free water] )
4. Total reaction volume is 20µL

## Amplification

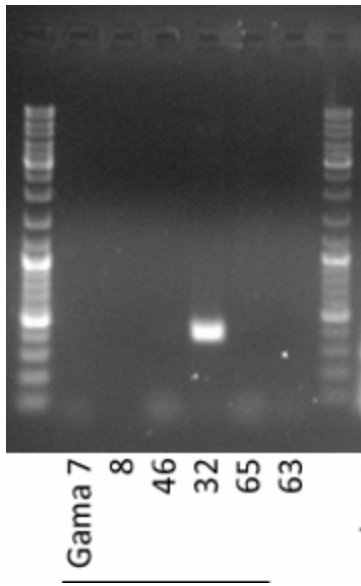
4

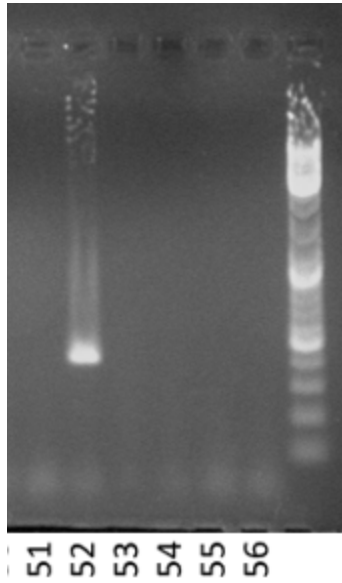
45°C	20min	1X
94°C	2min	1X
94°C	20sec	40X
55°C	20sec	
72°C	50sec	
72°C	10min	1X
15°C		∞

## Amplicon detection

- 5 5µl of amplicon is loaded into the well of a 1.5% agarose gel (TAE or TBE buffer according to your own protocols) and electrophoresed for at least 20min (depending on gel size) at 100-120V.

Be sure to include at least one known positive sample and a no-template control and load at least one well per gel row with a 100 base-pair ladder (or whatever may be in use at your lab for use with this sized amplicon).





**Figure 1.**

Two examples experiments showing positive results using the Gama assay (1 band per experiment) along with 100-bp ladder).