

Sep 20, 2019

Version 1

Collection and Post-Surgical Excision of Human Kidney Tissue through the Cooperative Human Tissue Network V.1

DOI

dx.doi.org/10.17504/protocols.io.7gehjte

Maya Brewer¹, Jamie Allen¹, Elizabeth Neumann¹, Agnes Fogo², Raymond Harris², Danielle Gutierrez¹, Mark De Caestecker³, Jeff Spraggins¹

¹Vanderbilt University; ²Vanderbilt University Medical Center;

³Division of Nephrology, Vanderbilt University Medical Center

VU Biomolecular Multim...

Human BioMolecular Atl...



Jamie Allen

Vanderbilt University

Create & collaborate more with a free account

Edit and publish protocols, collaborate in communities, share insights through comments, and track progress with run records.

Create free account

OPEN  ACCESS



DOI: <https://dx.doi.org/10.17504/protocols.io.7gehjte>

Protocol Citation: Maya Brewer, Jamie Allen, Elizabeth Neumann, Agnes Fogo, Raymond Harris, Danielle Gutierrez, Mark De Caestecker, Jeff Spraggins 2019. Collection and Post-Surgical Excision of Human Kidney Tissue through the Cooperative Human Tissue Network. **protocols.io** <https://dx.doi.org/10.17504/protocols.io.7gehjte>

License: This is an open access protocol distributed under the terms of the **Creative Commons Attribution License**, which permits unrestricted use, distribution, and reproduction in any medium, provided the original author and source are credited

Protocol status: Working

We use this protocol and it's working

Created: September 18, 2019

Last Modified: October 18, 2023

Protocol Integer ID: 27878

Keywords: HuBMAP, BIOMIC, Surgery, CHTN, kidney, nephrectomy, Cooperative Human Tissue Network, VUMC, human kidney tissue, kidney tissue, portion of kidney tissue, cooperative human tissue network scope, metadata about tissue location, cooperative human tissue network, human kidney, tissue location, whole kidney for storage, kidney, tissue, whole kidney, smaller tissue, metadata, image

Abstract

Scope:

Obtain kidney tissue and metadata about tissue location within the whole kidney for storage and analysis.

Expected Outcome:

A portion of kidney tissue and a series of images that provide information about the original location of the smaller tissue.

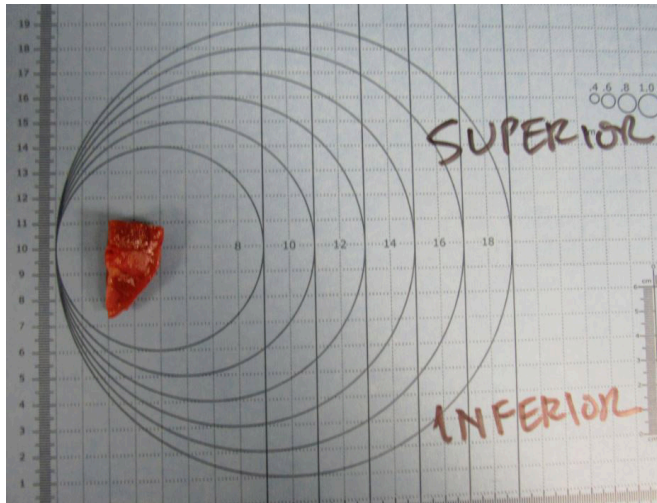
Materials

Digital Camera

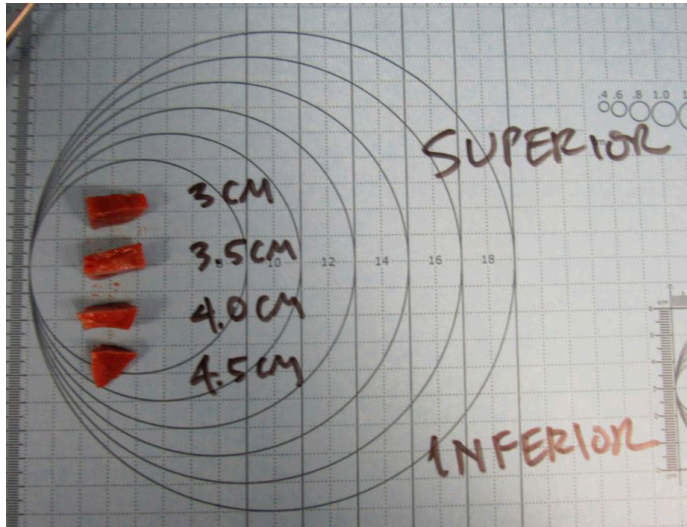
STERILAB Inc Grossing Boards 12X18IN, Fisher 50-131-7556

Troubleshooting

- 1 Kidney tissues are selected based on patient and clinical metadata (e.g. age<65 years old). All patients have consented to allow their tissue to be used for research purposes as part of this study.
- 2 Receive excised kidney from full nephrectomy.
- 3 Cut kidney in half along the longest plane and open like a book.
- 4 Cut out a portion of the kidney (~80 × 60 × 4 mm) that is farthest away from the tumor location.
- 5 Take a picture of the smaller piece of kidney in reference to its original location within the entire kidney if possible.
- 6 Take only a picture of the smaller piece of kidney.



- 7 Cut the piece of kidney into ~4 smaller, rectangular pieces (~2 × 15 × 4 mm).
- 8 Image each of these smaller pieces in reference to their original position.



- 9 Wrap kidneys in gauze and transfer tissue to those preparing tissue for long-term storage.